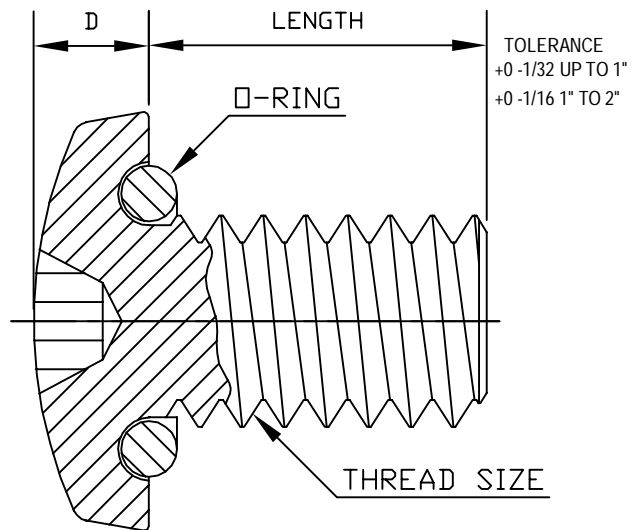
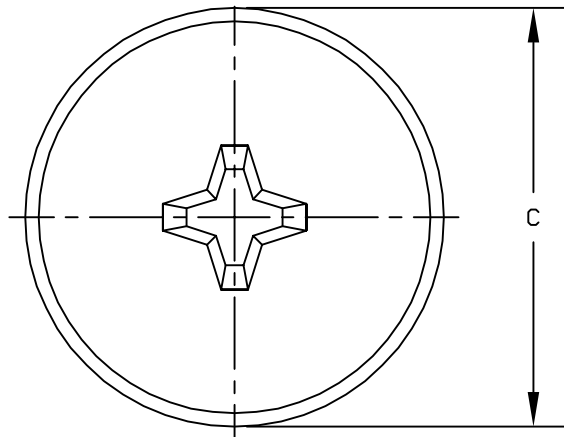
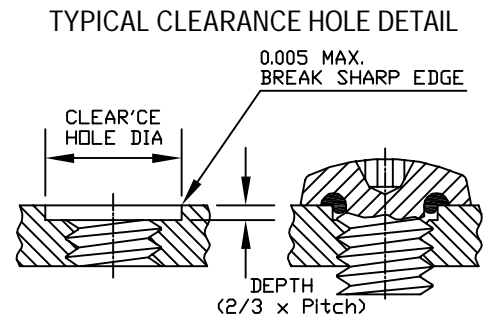


ALL DIMENSIONS IN INCHES



THREAD SIZE	C max	D max	Head Driver Size	RECOM. CLEAR. HOLE		LENGTH
				MIN.	MAX.	
2-56 UNC-2A	0.181"	0.062"	#1	0.091"	0.095"	1/4" to 1" incl.
4-40 UNC-2A	0.238"	0.080"	#1	0.125"	0.129"	1/4" to 1" incl.
6-32 UNC-2A	0.294"	0.097"	#2	0.147"	0.152"	1/4" to 1" incl.
8-32 UNC-2A	0.347"	0.115"	#2	0.173"	0.179"	1/4" to 1" incl.
10-24 UNC-2A	0.403"	0.133"	#2	0.199"	0.204"	3/8" to 1" incl.
10-32 UNF-2A	0.403"	0.133"	#2	0.199"	0.204"	3/8" to 1" incl.
1/4-20 UNC-2A	0.517"	0.175"	#3	0.265"	0.269"	3/8" to 1 1/4" incl.
1/4-28 UNF-2A	0.517"	0.175"	#3	0.265"	0.269"	5/16" to 1 1/4" incl.



STANDARD SPECIFICATIONS & COMMON OPTIONS (HOW TO ORDER)

STD. SCREW MATERIAL: TYPE 18/8 STAINLESS STEEL PER DFARS (OTHER MATERIALS AVAILABLE)
 STD. SCREW FINISH: NATURAL (PASSIVATED PER MIL-STD-171 UNLESS OTHERWISE SPECIFIED)
 STD. O-RING MATERIAL: SILICONE RUBBER (SEE TABLE FOR O-RING OPTIONS)

SAMPLE CATALOG NO.		R2-56X1/4-2701-BLKOX
SCREW TYPE	R	PAN HEAD WITH CROSS RECESS
THREAD	2-56	ENTER BASIC THREAD SIZE
	X	
LENGTH	1/4	ENTER LENGTH
O-RING SUFFIX	-2701	ENTER FROM TABLE
OPTIONS	-BLKOX	ENTER FROM TABLE

AVAILABLE O-RING MATERIALS		
Compound Suffix	Material	Service Temp.
-2701	Silicone Rubber	-150°F to 500°F -101°C to 260°C
-2615	Fluoro-Silicone Rubber	-78°F to 450°F -61°C to 232°C
-5701	Viton® A	-20°F to 400°F -29°C to 204°C
-4601	Buna N (NBR)	-65°F to 250°F -54°C to 121°C
-3701	Neoprene (EPR)	-65°F to 300°F -54°C to 149°C
-7601	Ethylene Propylene (EPDM)	-65°F to 300°F -54°C to 149°C

COMMON OPTIONS	
SUFFIX	DESCRIPTION
-BLKOX	BLACK OXIDE PER MIL-C-13924A, CLASS 2
-NY	LOCKING NYLON PELLET
-LY	LOCKING NYLON STRIP
-TP	LOCKING NYLON STD. PATCH
-HTP	HIGH TEMP. LOCKING NYLON PATCH

N	ADDED "PER DFARS" FOR THE SCREW MATERIAL	S. GOK	07.02.09	
M	NEW DRAWING FORMAT	S. GOK	01.21.09	
L	CHANGED LENGTH TOLERANCE and ADDED Note	S. GOK	06.10.08	
REV.	DESCRIPTION	DATE		
MAXIMUM AND MINIMUM MEASUREMENTS ARE STATED DIRECTLY ON EACH DIMENSION.	TITLE: SEELSKREW ®, PAN HEAD CROSS RECESSED	ENG.	S. GOK	06.10.08
		DWN.	S. GOK	06.10.08
		CHKD.	J. CELLA	06.10.08
MAT'L: AS NOTED	APM-HEXSEAL CORPORATION	SCALE	DWG. NO. R-0000-00-00	
FINISH: AS NOTED				

THIS DRAWING COVERS PROPRIETARY ITEM AND IS THE PROPERTY OF THE APM-HEXSEAL CORPORATION.
 THIS DRAWING IS NOT TO BE COPIED OR USED WITHOUT THE WRITTEN APPROVAL OF AN OFFICER OF THE APM-HEXSEAL CORPORATION.